

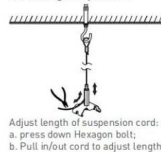


Tracking and luminaire:

First trunking rail should have one side connecting plate&last trunking rail with no connecting plate on both sides, then fix the Luminaire to trunking rail then lock holder, then keep end caps at both sides.



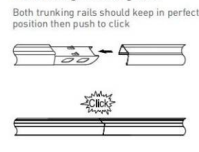
Step 1 Mounting Suspension



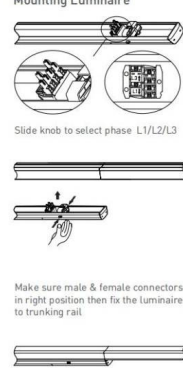
Step 2 Connecting Power Supply



Step 3 Connecting Trunking Rail



Step 4 Mounting Luminaire



Step 5 LED linear lighting system



Wire diagram of triple circuits function



Pendant and mounting installation

Starting Installation distances point should be 800 mm to 1000 mm, then in between 1st & 2nd point should be 3000 mm max



Four options for installation



Safety notes:
Installation should be performed only by
qualified electrician .

- Make sure no voltage while installation .
- Connect cable wires according to wire labeling.
- Max current should not exceed 16A in one power feed in circuit.



LED linear lighting System composition

Terminal module:

Terminal module can be independently installed as
a single unit, it also can be connected at end of one
linear light row.



Step 1 Mounting Suspension

Drill a hole on ceiling



Adjust length of suspension cord:
a. press down Hexagon bolt;
b. Pull in/out cord to adjust length



Step 2 Connecting Power Supply



Step 3 Mounting Luminaire



Slide knob to select phase L1/L2/L3



Make sure male & female connectors
in right position then fix the luminaire
to trunking rail

